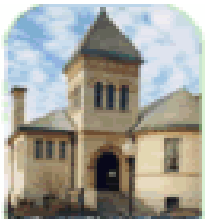
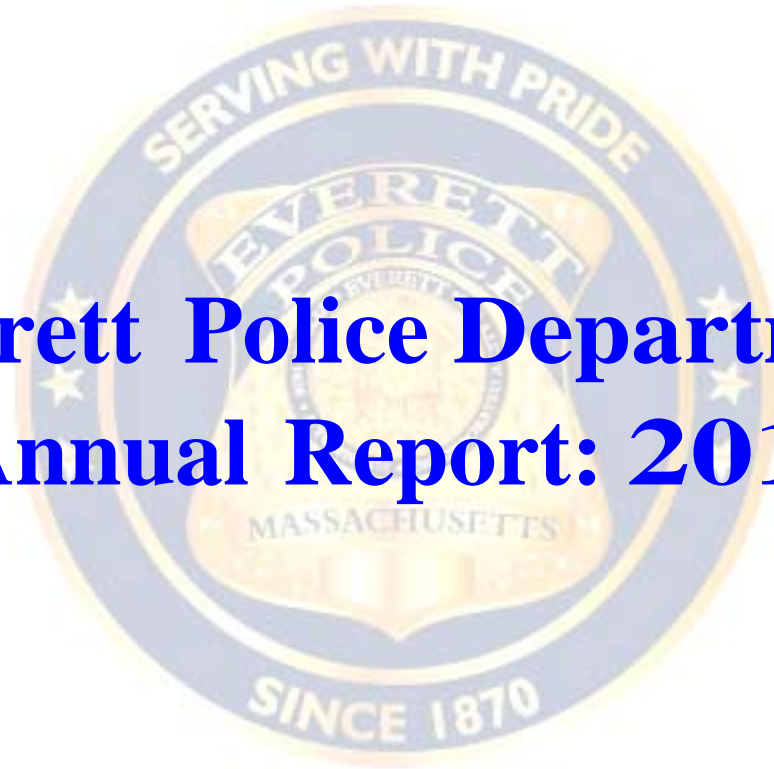


**Everett
Massachusetts**



Everett Police Department Annual Report: 2010



**Steven A. Mazzie
Chief of Police**

Mission Statement

The mission of the Everett Police Department is to provide community oriented law enforcement designed to protect life and property, maintain order, while assuring fair and equal treatment for all.

Law Enforcement Core Values

Professionalism- we are committed to the highest ethical standards of the law enforcement profession.

Respect- we pledge to preserve human dignity by caring for the citizens we serve, and for ourselves.

Integrity- we shall, through our behavior, reflect honesty, sincerity, and complete accountability.

Dedication- we are devoted to Public Service to enhance the quality of life for all.

Excellence- we encourage innovation, effectiveness and efficiency through training, skills and effort.

Our Motto:

“Serving with Pride Since 1870”

Table of Contents

Section	Page Number(s)
Mission Statement	1
Table of Contents	2
Message from the Chief.....	3
Message from the Mayor & a note on Bishop Brown.....	4
Organizational Chart.....	5
Dept. and City Wide Activities.....	6
Administrative Services Division.....	7
Operations Division.....	8
Criminal Investigations Division.....	9-11
Special Services Division.....	12-14
Crime Analysis.....	14
NIBRS Reportable Offenses and Crime Rates 2006-2010.....	15
5 Year Trends.....	16-17
Offenses with Notable Change in 2010.....	18-19
Calls for Service.....	20-21
Hot Spots.....	22
Arrest/Summons/Citation Data.....	23

For additional information on crimes as they occur in Everett and the surrounding cities visit CrimeReports.com. Crimereports.com is the largest online resource for accurate, up-to-date crime information. The data is updated three times a week. **Crimereports.com** users are also able to access up-to-date sex offender registry data from the National Sex Offender Registry for any City posting data to crimereports.com. This data is updated weekly. The site is free to use and can be accessed through www.crimereports.com, select MA, and then Everett; or the city's site can be accessed through a link posted on the Everett Police Department's website (<http://everettpolicema.com/>).



A MESSAGE FROM THE CHIEF



I am proud to present to you the 2010 Annual Report of the Everett Police Department (EPD). The Everett Police Department continues to provide the best possible services to all members of our community in a consistent and fair manner. We have established close partnerships within the community in an effort to reduce crime and the fear of crime, as well as improving the quality of life for all our residents. It has been an honor and privilege to serve as the Chief of Police since 2003. Although we have been faced with tough financial times and a ten percent decrease in personnel, I am pleased with the level of services that we have been able to continuously provide the residents of our city. We have had a mixed bag of crime category increases and decreases over the year. This report provides more detail on the specifics, but I feel good knowing that we have been able to bring robberies and vandalism down as well as bring overall crime down by 6 % over the last five years.

In 2010, EPD had 91 sworn police Officers, 9 civilian staff and 1 sworn animal control Officer. We continue to make a difference in our residents' lives by providing timely community information on numerous crime and safety issues. Some of our new initiatives this year included the new TIP411 system that allows residents to text-a-tip on criminal information, a new narcotics detection dog that filled the void of K9 Niko who passed away suddenly, a second explosive/firearms detection dog, new equipment for personnel working the waterfront, as well as technology for the 911 Dispatch Center and on the streets, such as our License Plate Reader (LPR) which has already made a difference in detecting stolen, unregistered and revoked motor vehicles. Lastly, we are participating in the Communities for Restorative Justice Program which allows us to address juvenile issues in a new productive way.

There continues to be concern with the level of violence that is occurring in most of the major cities in the Commonwealth. Everett is not immune, as we unfortunately experienced three homicides this year with two of them solved to date. We experienced the first Officer involved shooting in a number of years when a bank robbery suspect lunged at an Officer with a knife. We are working with our partners and neighbors from the metropolitan Boston area to develop strategies to reduce and remove those from the streets that commit these senseless acts of violence.

You will be glad to know that our Officers continue to be some of the best equipped and trained in the Commonwealth. We not only have a progressive In-Service training program, we offer specialized leadership training to our Officers at all ranks. I appreciate and value the continued feedback that we receive from members of the community and from within the ranks of the Everett Police Department. We are constantly trying to find ways to improve our services with your input.

In closing, I want to thank all members of the EPD, both civilian and sworn personnel, for their continued dedication, service and a commitment to partnering with our community members. We will continue to be transparent, accountable, and provide quality leadership within the community. I am committed to using all resources in an effort to provide you, the people of Everett, with the best possible services.

Sincerely,

A handwritten signature in black ink that reads "Steven A. Mazzie". The signature is written in a cursive style.

Steven A. Mazzie
Chief of Police

A MESSAGE FROM THE MAYOR

Dear Residents,

Effective Law Enforcement is the product of leadership, professionalism and a commitment to strong community involvement. The Everett Police Department continues on a progressive mission. With multi-city task forces, the Anti-Gang unit, School Resource Officers and effective Data Analysis, the EPD is a standout department in the Commonwealth.



I am very proud of our Department, as keeping our beloved City safe is no easy task. The women and men of the EPD serve the community with great distinction. Their partnerships among our diverse groups, involvement with our seniors, working with our teens at the Boys and Girls Club and educating our youth, prove their enduring trust and respect of our residents.

I appreciate and look forward to another healthy, safe and productive year.

Sincerely,

A handwritten signature in black ink that reads "Carlo DeMaria, Jr." The signature is written in a cursive, flowing style.

Carlo DeMaria, Jr.

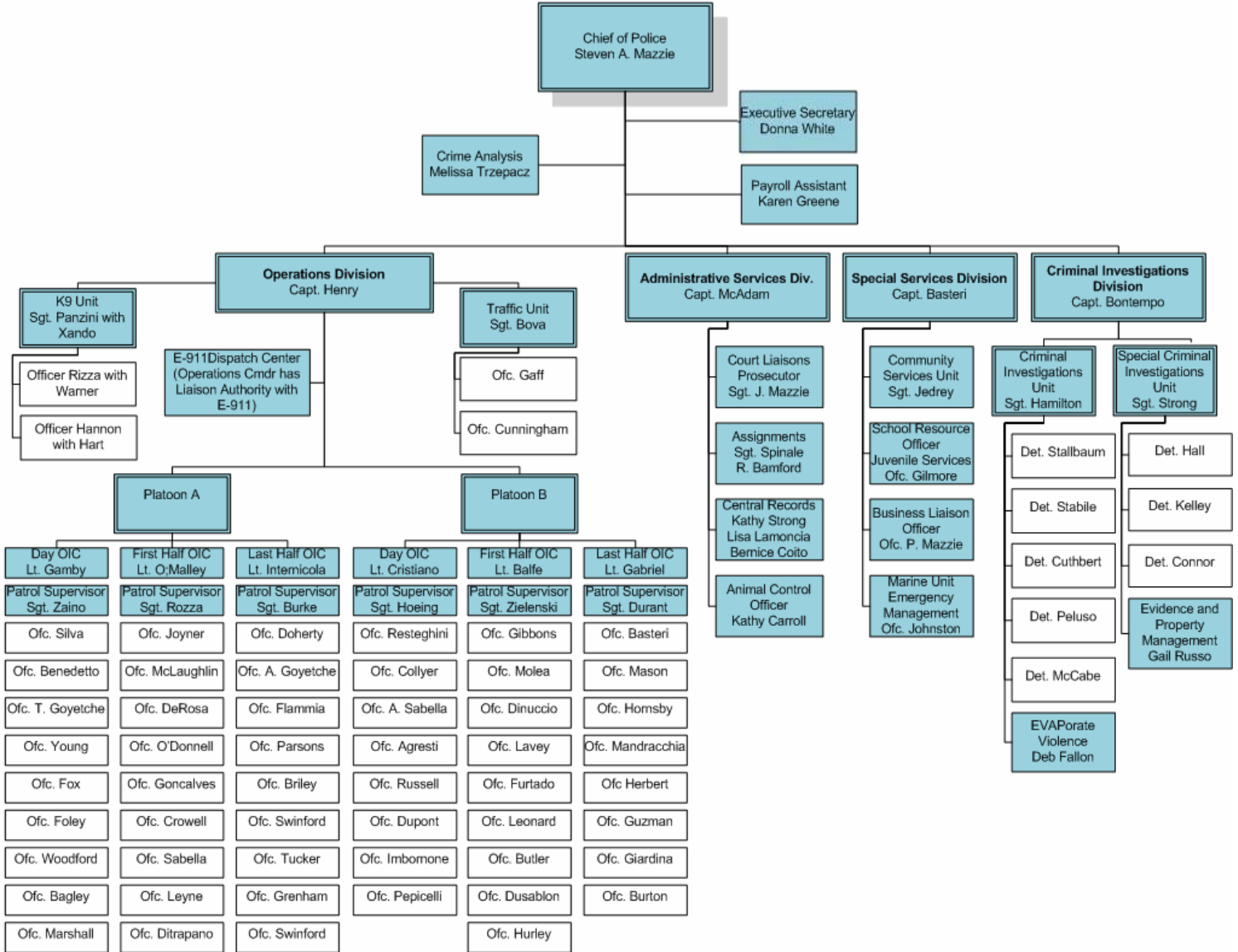
The members of the Everett Police would like to thank Bishop Robert Brown of Zion Church Ministries for his work with the department as Chaplain, and for providing emergency services to our personnel.



Bishop Robert G. Brown is the Presiding Prelate of Covenant Christian Church Alliance, Inc., and Senior Pastor of Zion Church Ministries, Inc, Everett, MA, a pastorate including Zion Baptist Church, located in Everett, MA, where he has pastored for thirty years. He is the Chaplain of the Everett Police Department, Assistant Chaplain of the Everett Fire Department, a member of Governing Board of Eagle Bank and the Board of Directors for Portal to Hope. Bishop Brown has been active in the Everett community in school affairs and social concerns. In response to the needs of the community, Zion Church Ministries provides the Angel Food Ministries, ESL classes for Spanish speaking people, the Closet Ministry which offers free clothing to the needy, and many other services, to include an annual Community In Unity Block Party. Bishop Brown also serves on the Mayors Advisory Board and works with the Everett clergy.

Organizational Chart

In 2010, the Everett Police Department finished the year with 91 sworn Police Officers, 1 sworn Animal Control Officer and 9 civilian employees.
****Not included in chart: On Military leave Lt. Paul Landry****



Prescription Drug Drop-box



The Everett Police Department is open 24 hours a day for residents to drop off unneeded or expired prescription drugs. Residents are encouraged to come to the Everett Police Department and properly dispose of their prescriptions by placing them in the prescription drop-box located in the lobby. This program involves no paperwork and there are no questions asked.

In January of 2010, 57 boxes of both prescription drug and over the counter medications ranging from aspirin to Trazodone to Fentanyl patches were received. On December 16th, 2010, approximately 60 pounds of product consisting of over 500 bottles of medications (some bottles containing 100 to 500 tablets) were destroyed safely. OxyContin, Fentanyl, Oxycodone, liquid morphine sulfate and xanax were among the many thousands of pills that were incinerated. When residents remove unwanted drugs from their medicine cabinets, it reduces the likelihood of medications falling into the hands of young people. The Prescription Drug Drop-Off Program will continue to be implemented into the distant future. Additionally, the EPD participated in a nationwide prescription and over the counter drug drop off program in September during Homecoming Weekend. 40-50 lbs of drugs were dropped off at this event. The medications were immediately transported to a collection site in Danvers where a representative of the Drug Enforcement Agency took possession of the medications for future destruction.

National Night Out: Mayor Carlo DeMaria Jr. and the EPD hosted Everett's Seventh Annual National Night Out – America's Night Out against crime. Everett's National Night Out is a collaboration with the National Association of Town Watch a non-profit crime prevention organization which works in cooperation with thousands of crime watch groups and law enforcement agencies throughout the country, (source www.nationaltownwatch.org). In 2010 more than 1000 people attended the event, which was double the usual turn out. The event included a free barbeque, slush, popcorn, games, prizes and concluded with the traditional "Supporters Parade" in Glendale Square.

Tip 411: Introduced in October 2010, this web-based Text-a-Tip system allows citizens to anonymously report messages to the police via text messages. This media allows a police investigator to "chat" with an anonymous tipster concerning unsolved crime, to report weapons, drugs and narcotics and other suspicious activity not in progress. Tips generated in other police agencies across the country have been beneficial in leading to the arrest of dangerous felons. Although new, we hope this system will mirror the successes of other communities.

License Plate Reader: In January, 2010 the Everett Police Department received a Justice Assistance Grant which was used to purchase a License Plate Reader (LPR) for the Traffic Unit. In late September, a vehicle was outfitted with the LPR and is being used to locate traffic scofflaws and vehicles wanted in connection with serious crimes.

**Administrative Services Division
Captain Patrick McAdam**

The **Administrative Services Division** of the Everett Police Department includes the Court Liaison Officer, Central Records, and the Animal Control Officer. This Division is responsible for scheduling and logging all training completed by EPD personnel.

Over 6,500 hours of training were completed by sworn members of the Everett Police Department in 2010. All department members complete an annual in-service training (examples: CPR, First Aid, legal updates, elderly and juvenile matters, defensive tactics and fire arms). Some members receive specialized training in a number of different areas including: underwater search and recovery, interview and interrogation, fingerprinting and terrorism response. Additionally, Officers are required to participate in various online classes and trainings. In 2010, there was an increase in the Officer's use of the online based trainings.

In 2010, six interns from various colleges in Massachusetts completed course requirements through the Everett Police Department Intern Program (over 600 hours combined). During their internships, the students learned about the various units of the police department, shadowed Detectives, Patrolman, the crime analyst, and other members of the department. The interns also went to the range and rode with Officers in patrol cars.

The **Court Liaison Officer (CLO)** for the department interacts on a daily basis with the District Attorney and the court's various departments, such as the clerk and probation. The CLO reviews all reports submitted by the department's Officers ranging from arrest or warrants to criminal complaints. Additionally, this Officer is responsible for the scheduling and appearance of Officers in the Commonwealth's various courts.

The **Detail/Assignments Officer** is responsible for assigning Officers to work with public and private contractors on various projects throughout the city. Additionally, the Officer is responsible for the billing and accounts receivable; and for helping to plan the staffing needs at large scale events.

The **Central Records Bureau** is where all police related records are maintained and stored. Clerks in the records bureau respond to numerous requests for documents such as accident reports, police reports, daily arrest, and incident logs. Additionally, all traffic citations are entered into our records management system through personnel assigned to this bureau.

The **Animal Control Officer (ACO)** is responsible for enforcing City Ordinances for domesticated animals throughout the city and helps identify lost or injured animals.



Operations Division
Captain James F. Henry

The Everett Police Department's **Operations Division** consists of one Captain, six Lieutenants, eight Sergeants, and approximately fifty-four Patrol Officers. Patrol shifts rotate and consist of four ten hour shifts consisting of the day shift, evening shift and the over night shift. Each shift is comprised of a Lieutenant, one Sergeant and a squad of eight to nine Officers. The Lieutenant commands each shift and the squad is led on the street by the Sergeant. All of our shifts overlap by forty five minute between the day shift and evening shift with a five hour overlap between nine p.m. and two a.m. This period is our busiest and our manpower levels are doubled to address the increase in calls for service.

The Operations Division is the largest Division in the Everett Police Department. It operates year round, seven days a week twenty-four hours a day. It includes Patrol Units, Traffic Units and K9 Units. The function of the Patrol Units is to provide uniform patrol coverage to all areas of the city. Officers conduct patrols on foot, bicycle and in motor vehicles. They respond to crimes in progress, motor vehicle crashes, directed patrols, injuries, illnesses and fires. They routinely arrest offenders, investigate citizen complaints, provide traffic control and enforcement, appear in court, and attend community based meetings. Officers perform Directed Patrols for specific issues brought forward by the community or through crime analysis and mapping by the department's Crime Analyst. Officers are engaged during down time with "Walk and Talks" directed towards areas of concern to the community and report writing.

The primary goal of the Operations Division is the prevention of crime and disorder by adhering to community policing principals which have been adopted by the Everett Police Department. Under this philosophy Officers are assigned to designated areas of the city, called sectors and each Officer has a responsibility to address the concerns in the area with the assistance of specialized units, other City Departments and community members.

Traffic and K9 Units assist Patrol Units in calls for service but also are engaged in other duties. Traffic personnel conduct targeted traffic enforcement in neighborhoods, provide escorts for a variety of events, investigate hit and runs, coordinate field sobriety checkpoints and educational outreach within the community. K9 Units consist of a handler and assigned dog trained in a variety of functions. The Everett Police Department has three K9 Units, one is used for patrol and drug detection and the other two are trained for explosives and firearms evidence recovery. In 2010, the K9 Unit welcomed the arrivals of Xando, a 1.5 year old Slovakian Sheppard who is a drug/patrol K9 and Hart, a three year old Black Lab who started his service training with the Guiding Eye School for the blind. Hart is an explosive and firearms detection K9. Also in 2010, the Everett Police Department mourned the death of their Czechoslovakian Sheppard Niko, who passed away of natural causes in May. Niko was trained for narcotics search, recovery, and utility work. Niko served the department for six years.

This Division responds to Emergency 911 calls and of the 25,146 calls received in 2010, approximately 4,246 were documented as incidents requiring reports. During this period, the department responded to 1,325 motor vehicle accidents, and arrested 864 individuals.¹

¹ Microsystems, CrimeTracks. Retrieved January 27,2011 from the PROIV database. ****CrimeTracks is EPD's Records Management System. ****

**Criminal Investigations Division
Captain Robert Bontempo**

The Everett Police Department **Criminal Investigation Division (CID)** investigates criminal activities that occur in the City of Everett or have an effect on the City of Everett and its residents. In 2010, 745 criminal cases were assigned to members of the unit. The average case load assigned for follow-up per Detective was 124 cases and the seriousness index ranged from murder to annoying phone calls.

The CID's 10 Detectives are assigned to both the Criminal Investigations Unit (CIU) and the Special Criminal Investigations Unit (SCIU) and they work closely with investigators from other local, state and federal agencies and regularly share personnel resources and information. CID personnel are also affiliated with several taskforces that have been established to address specific types of crimes such as narcotics distribution. CID personnel regularly carry caseloads that involve crimes such as, burglaries, housebreaks, bank robberies, MV theft, computer/cyber crime, larceny, financial crimes as well as warrant apprehension and follow up on domestic violence and sexual assault cases.

A Detective is assigned to handle all sex offender registry issues as well as the follow up of all missing persons.

Everett Police hosts a Crime Prevention group that meets the third Tuesday of every month at 7 PM at police headquarters. All are welcome.

CIU Major Cases for 2010

There were three murders in the city. In the first homicide, a 28 year old male suffered a gunshot wound to his upper torso. Video footage from several sources was used to identify the 20 year old shooter, who was arrested three days later. In the second homicide, a 73 year old woman was found in her kitchen with severe trauma. The suspect has not been identified and the case remains open. The third homicide victim was a 29 year male who suffered a stab wound to the chest from a screwdriver. Excellent crime scene preservation and eyewitness canvassing by first responding uniformed Officers was instrumental in the identification of a 20 year old suspect who was arrested 10 hours later.

In the summer of 2010, both the Eagle Bank and Co-Operative Bank were robbed by a male alleging he had a gun. He was described as having a band-aid patch covering a portion of his neck. Upon leaving the second robbery, the suspect was confronted outdoors by the bank's Vice President. The suspect fled on foot and was followed by a citizen who was able to give the general direction of the suspect's flight. Two Detail Officers gave foot pursuit of the suspect into backyards where he was cornered. The suspect brandished a knife, ignored Police commands and was shot. The suspect survived the shooting.

State Police CPAC and the Everett CIU began their follow-up investigation and eventually executed a search warrant on the suspect's home. Further evidence was seized implicating the suspect in the first bank robbery. The District Attorneys Office later found the shooting to be justified and the Officer was cleared.

CIU Major Cases for 2010 Continued

Numerous other incidents were investigated by members of the CIU throughout 2010 with many successful outcomes. One homeless individual was charged numerous times for breaking into buildings. In each crime, surveillance video was reviewed by the case Detective who made the identification and arrest. In another incident a CIU Detective was able to successfully investigate and close a taxi carjacking case. The cab driver was seriously assaulted. The male suspect was accompanied by two females. The Detective had recalled a description of three defendants arrested for a double purse snatching whose clothing description matched the suspects description of the car-jacking the day before. The Detective questioned the three and all admitted their involvement in the previous case. During the investigation, it was revealed that the male suspect was wearing brass knuckles during the assault. All three were charged accordingly.

In a cold case reported on April 8, 1954, Everett Police responded to 15 Haskell Avenue on a report of an unconscious man in a vehicle. This man was deceased with a gunshot wound to the head. This case remained open and in late 2010, an elderly man reported to Suffolk County law enforcement that he was responsible for the shooting death. He alleges that he shot the man in Revere and drove the victim in his car over the city boundary into Everett. The suspect's recollection of the facts and circumstances of the event appear credible and the case may soon be closed.

Special Criminal investigations Unit (SCIU)

The SCIU mission is to suppress overt and covert drug dealing, prostitution and other types of crimes of a sensitive nature. The SCIU accomplishes their mission by targeting street level and midlevel drug dealing through the use of undercover Officers, Confidential Informants, and decoys. The unit is additionally involved with taskforces at the federal level, which are comprised of Officers from other local and state agencies. Additionally, Detectives of the unit assist other agencies in their efforts to address cross-border drug distribution in neighboring communities. Currently, there are three Detectives and one Sergeant assigned to the unit. One Detective is assigned full time to the DEA task force.

SCIU 2010 Initiatives and Results

The SCIU was involved with 110 arrests (**92** in Everett, **10** in Chelsea and **8** in Malden) and executed 10 search warrants. Additionally, the following types and quantities of drugs and property were seized:

Property Type	Amount
Heroin	304 grams
Cocaine	698 grams
Marijuana	10 lbs
Firearms	17 guns
Cars Seized	15
Money Seized	\$45,000+

The SCIU also worked six cases of cocaine trafficking and one case of heroin trafficking. During one drug search warrant, a search of an apartment revealed 12 illegal firearms and numerous rounds of ammunition.

SCIU 2010 Initiatives and Results Continued

The SCIU assisted the DEA in two large scale investigations that involved the distribution of large amounts of cocaine in the Everett and greater Boston area.

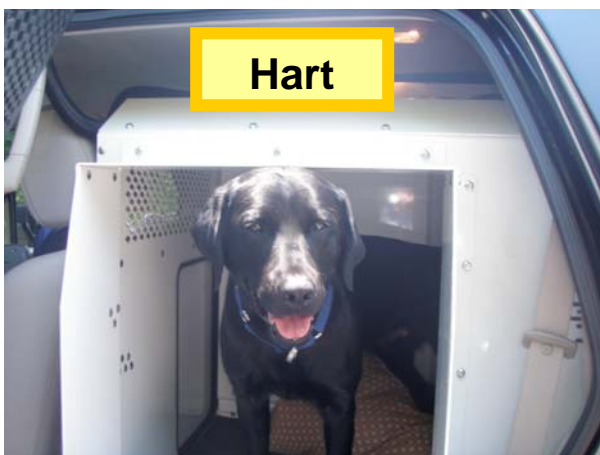
1. Operation Straight Flush involved the investigation of a drug network out of Mexico and Texas. This organization smuggled 56 kilos of cocaine into the Everett area. Based on investigative techniques Everett SCIU Detectives were able to locate the vehicle that contained the 56 kilos. Two male suspects were taken into custody without incident and the 56 kilos of cocaine were recovered.
2. Operation Magic Wand involved the investigation of a family that had been distributing a large amount of crack cocaine in the Dorchester area for years. This was a six month undercover operation that resulted in hundreds of hours of recorded conversations that lead to the arrest of fifteen individuals, a large seizure of cocaine along with a large amount of money, property, jewelry and cars.

The SCIU also disrupted an illegal massage parlor and two Chinese nationals were placed under arrest for prostitution.

The **EVAPorate Violence Project** is also part of the CID. In 2010, EVAPorate Violence served 562 victims (women and children) who had an active 209A Abuse and Prevention Order. 400 of the victims were women, of which 90 are under the age of 18. There were 162 male victims, of which 111 are under the age of 18. 235 of the 562 orders were opened in 2010.

185 Victims of Domestic Violence enrolled in 3-day to 8-month advocacy programs at *EVAPorate Violence* in 2010. Services largely included victim witness advocacy in Probate & Family, District, Municipal, Superior and U.S. Immigration & Naturalization Courts; safety planning; and crisis intervention. Note: *Of these clients, 62 were referred to Portal To Hope for comprehensive care services, including emergency shelter, housing relocation, transportation, counseling, legal aid and related services.*

Of the 2010 clients served by *EVAPorate Violence*, 88 were ongoing as of January 2, 2011 (97 cases closed for 2010), and require service commitments through December 31, 2011.



**Special Services Division
Captain Richard Basteri**

The **Special Services Division (SSD)** of the Everett Police Department has many responsibilities, including juvenile crimes, gang investigations, School Resource Officers, community relations, Homeland Security and Emergency Management. Special Services Officers are also part of a regional Gang Task Force known as the “Metro-Gang Task Force,” with nine other communities and several Federal agencies. This is funded under the Charles E. Shannon community safety grant. Lastly, the SSD offers two specialized units to support the Operations Division, the Special Operations Unit (SOU), which is a trained and equipped tactical team to deal with high risk warrant service and barricaded subjects and the Underwater Search and Recovery Unit (USRU), which is a team of trained and equipped divers to respond to underwater emergencies and missions on our waterfront.

The **Community Services Unit** consists of one Sergeant and three Patrolmen. Two Officers have a dual role. They are assigned as School Resource Officers (SRO) and are placed in the High School in partnership with the Everett Public Schools to increase safety in the schools and to develop an open ongoing dialogue between the youths and the police department. The Officers assigned as SROs have been trained and certified in their special classification and on occasion will help out with issues in the cities remaining middle schools. SRO’s attend bi-weekly Juvenile Justice meetings with school officials, juvenile probation, mental health professionals, the Middlesex District Attorney’s Office, and assist school administrators with grades K to 8.

These same Officers that are assigned as SRO’s split their time with the Gang Unit and are responsible for patrolling hot spot areas of the city, including parks and playgrounds. These Officers also identify and disrupt gang activity and youth related incidents, conduct follow up investigations, work with the Metro Gang Task Force, attend community meetings and assist with community and neighbor problems.

The department dedicates a Community Services Officer to work with the business community. This Officer is responsible for patrolling the mall and square areas. This Officer provides a visible deterrent to crime and offers strategies to reduce the likelihood of victimization to these areas. This Officer also attends community meetings and assists with community and neighborhood problems.

The Marine Unit is also part of the SSD. One Officer is assigned to this unit and he is responsible for patrolling the 3.5 miles of Everett’s waterfront and is involved in ongoing homeland security and emergency management related functions. This Officer writes and manages grants and special projects for the department and works in conjunction with regional partners in the planning and preparation of responses to terrorist related incidents. He serves on various regional committees including Communications Interoperability, Critical Infrastructure and Regional Evacuation.

In 2010, the Marine Unit Officer was awarded a LifeSaving Commendation bringing the total number of water rescues to 12 since the units inception in 2002. This Officer was also recognized with a Community Service award

In 2010, the USRU assisted by the Marine Unit completed twelve security dives at the LNG facility.

Special Services Initiatives and Results

2010 saw the completion of the Buffer Zone Protection Program (BZPP) grant project. In 2006, the City of Everett was awarded a 1 million dollar grant that was managed by the SSD. This grant is a part of an Infrastructure Protection Program, which provides funds for prevention and protection programs against terrorist incidents.

The grant money was used to upgrade communications equipment; improve telecommunications infrastructure; provide computer hardware and software for police, fire and 911; upgrades to the E911 center; Emergency Operations Center upgrades; specialized equipment for the SOU.

Projects and Purchases Made for Everett under 2006 BZPP

Relocate EPD Police backup repeater to Hancock St Fire Station, Mobile Data Terminals installed in Police and Fire Vehicles, Police Intranet "Electronic Roll Call" created, New Evidence Control System, Video System Upgrades allowing for images to be displayed simultaneously and identically in multiple locations, CAD upgrade of software and additional hardware that shifts operations from UNIX based server to a LINUX based one and allow for browser-based access in mobile units with minimal lag time. This project also allows for integration of CJIS and NCIC data with the MicroSystems software, 911 Center upgrade that includes all new consoles and furniture as well as advanced electronics such as computing, radio and telephone communications, streaming video integration, and 911 equipment from SETB, repowering of EPD Police Boat, Dive Team Equipment upgrades, EPD Traffic/Motorcycle Unit and Special Operations Unit Communications upgrades, Training Room Media Equipment, Emergency Operations Center (EOC) Data upgrade consisting of a new high speed, Handheld Optical Equipment including Nightvision monoculars, New City Master Server, New Video Server for ECTV, EPD Headquarters Access Control System.

In addition \$100k was made available to our partner, the Mass State Police to allow them to upgrade their detection and response capabilities in and around the Everett waterfront.

Metro-Gang Task Force - In September, the Metro-Gang Task Force, along with the Boston Police Youth Violence Strike Force, and State Police Gang Unit, assisted the Cambridge Police Department with security at its annual Cambridge Caribbean Festival. At the end of the event, 12 arrests had been made, including one with the recovery of an illegal firearm. With continued grant funding for 2011 in process, this collaboration will continue.

Underage Alcohol Enforcement - Throughout the summer of 2010, CSU continued to work with the City of Everett Licensing Commission in the detection, enforcement, and public education of underage drinking laws under a grant from Massachusetts Executive Office of Public Safety and Security (EOPSS). Targeted patrols and sting operations were successful in deterring many underage youth from acquiring and consuming alcohol.



Special Services Initiatives and Results Continued

Restorative Justice- the Community Services Unit (CSU) cleared a case of larceny at the Everett Boys and Girls Club using practices outlined though Restorative Justice. The purpose/principles of restorative justice are to bring justice back to the community and to hold offenders accountable; with a goal of lowering recidivism rates. In this case, a young male was caught stealing money and goods from the Club. The youth was not brought through the criminal justice system; rather the Club asked that he repay the debt through community service and other steps. These steps included: working at the Club, paying the Club back, taking accountability for his actions, and interviewing local managers about the types of skills and qualities that they look for in employees and then taking what he learned to find a job for himself. The EPD hopes to use these principles in more cases in 2011.

G.R.E.A.T. – Gang Resistance Education and Training

In September, the department received a \$35,000 grant from the Bureau of Justice Assistance to bring the G.R.E.A.T. Program to the Everett Public Schools. This is a school based program designed as an immunization against delinquency, youth violence, and gang membership, and to foster positive relationships with law enforcement. Three EPD Officers received this training under this grant. Instruction begins in February of 2011 with the implementation of the Middle School program at the 6th grade level.

2010 Junior Police Academy – this year saw a tremendous increase in the number of applications submitted for selection to the 2010 Jr. Police Academy. The focus for this year was team building and teamwork. Forty-Five boys and girls in the 6th 7th and 8th grades were selected to attend. Aside from classes and demonstrations in daily police operations, SWAT, Criminal Investigations, Traffic Enforcement, and Marine Unit Operations, the squads were motivated by daily exercising, running, and team building exercises.

Crime Analysis

Crime analysis involves the systematic analysis of identifying and analyzing patterns and trends in crime. The information collected on trends and patterns can help law enforcement agencies deploy resources in a more effective manner, and assist Detectives in identifying and apprehending suspects. Another goal of crime analysis is to create solutions to crime problems, and develop crime prevention strategies. Crime analysts study crime reports, arrests reports, information from other agencies, and police calls for service to identify emerging patterns, series, and trends in a timely manner.

The Everett Police Department currently employs one part-time analyst. Our **Crime Analyst** issues bulletins, reports, and alerts to the Everett Police Department and other agencies statewide. In addition, our analyst also: prepares statistics, completes data queries, creates maps on request, prepares information for community meetings, answers questions from the public and the press, and participates in regional information sharing meetings.

In 2010 the analyst worked with Everett Community TV on the informative television series *Public Safety: Crime Analysis*. This program highlighted the department, the crime analysts' role, and services provided.

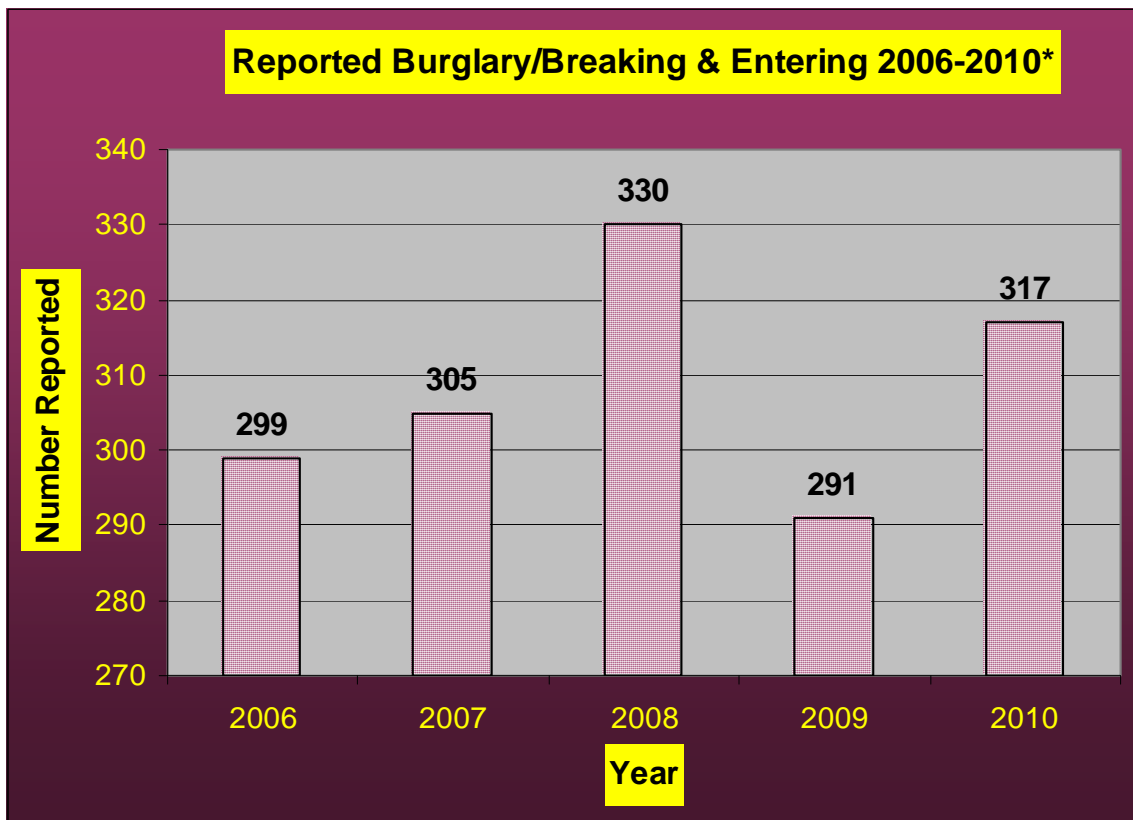
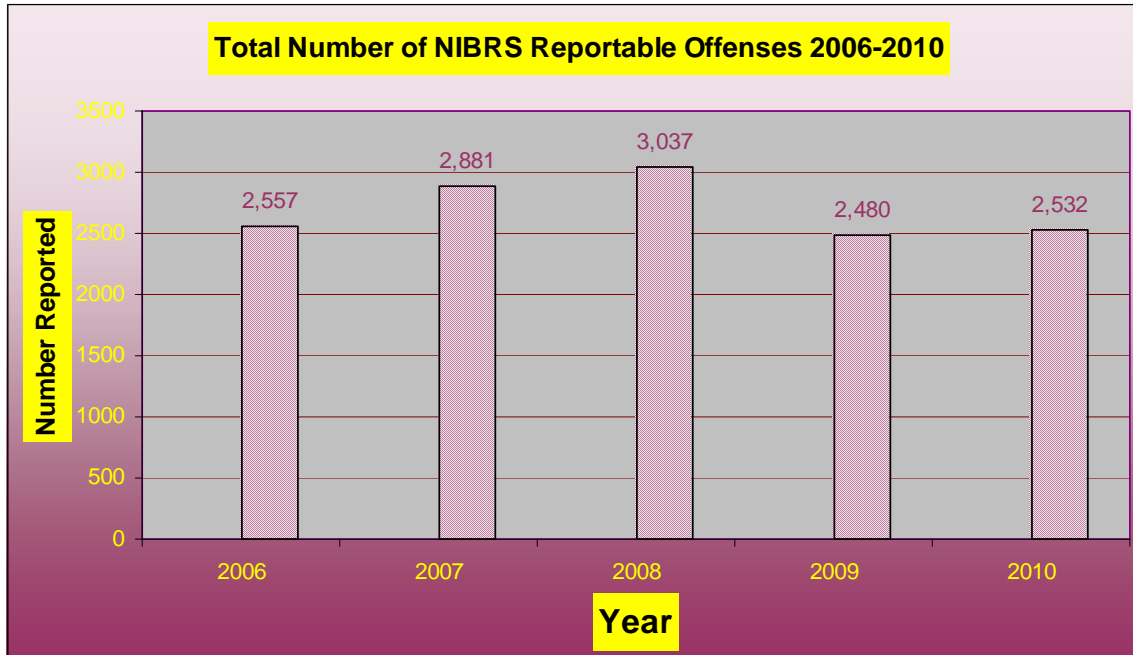
Table 1: 2006-2010 NIBRS Reportable Offenses and Corresponding Crime Rates²

Note: If offense type does not appear, then none were reported.

Jurisdiction	Everett									
Measures	Number of Offenses					Crime Rate (per 1,000)				
Incident Date	2006	2007	2008	2009	2010	2006	2007	2008	2009	2010
Offense Type	2006	2007	2008	2009	2010	2006	2007	2008	2009	2010
Total	2,557	2,881	3,037	2,480	2,532	69.09	77.30	81.49	66.54	67.94
Murder and Nonnegligent Manslaughter		2	2	1	3		0.05	0.05	0.03	0.08
Kidnapping/Abduction	2	6	6	1	2	0.05	0.16	0.16	0.03	0.05
Forcible Rape	11	12	17	7	13	0.30	0.32	0.46	0.19	0.35
Sexual Assault With An Object		1		1			0.03		0.03	
Forcible Fondling	6	5	4	8	11	0.16	0.13	0.11	0.21	0.30
Incest			1					0.03		
Statutory Rape			4	3	1			0.11	0.08	0.03
Aggravated Assault	99	128	122	116	134	2.68	3.43	3.27	3.11	3.60
Simple Assault	277	310	338	300	309	7.48	8.32	9.07	8.05	8.29
Intimidation	96	116	110	105	122	2.59	3.11	2.95	2.82	3.27
Arson	3	1	1	1	2	0.08	0.03	0.03	0.03	0.05
Burglary/Breaking & Entering	299	305	330	291	317	8.08	8.18	8.85	7.81	8.51
Counterfeiting/Forgery	11	7	11	11	18	0.30	0.19	0.30	0.30	0.48
Destruction/Damage/Vandalism of Property	538	697	713	427	383	14.54	18.70	19.13	11.46	10.28
Embezzlement	1		1		2	0.03		0.03		0.05
Extortion/Blackmail	1	1	2		1	0.03	0.03	0.05		0.03
False Pretenses/Swindle/Confidence Game	10	12	9	12	16	0.27	0.32	0.24	0.32	0.43
Credit Card/Automatic Teller Fraud	37	41	32	53	55	1.00	1.10	0.86	1.42	1.48
Impersonation	49	62	44	60	39	1.32	1.66	1.18	1.61	1.05
Welfare Fraud	7	1	5	5	3	0.19	0.03	0.13	0.13	0.08
Wire Fraud	2		2	4	4	0.05		0.05	0.11	0.11
Robbery	63	62	53	83	69	1.70	1.66	1.42	2.23	1.85
Pocket-picking	3	3	7	2	2	0.08	0.08	0.19	0.05	0.05
Purse-snatching	17	18	20	15	13	0.46	0.48	0.54	0.40	0.35
Shoplifting	99	74	106	92	86	2.68	1.99	2.84	2.47	2.31
Theft From Building	53	53	52	51	73	1.43	1.42	1.40	1.37	1.96
Theft From Motor Vehicle	184	280	393	282	317	4.97	7.51	10.54	7.57	8.51
Theft of Motor Vehicle Parts/Accessories	7	8	13	13	15	0.19	0.21	0.35	0.35	0.40
All Other Larceny	329	375	319	257	290	8.89	10.06	8.56	6.90	7.78
Motor Vehicle Theft	194	173	157	146	109	5.24	4.64	4.21	3.92	2.92
Stolen Property Offenses	23	21	32	16	21	0.62	0.56	0.86	0.43	0.56
Drug/Narcotic Violations	90	71	87	71	68	2.43	1.91	2.33	1.91	1.82
Drug Equipment Violations	21	14	20	26	19	0.57	0.38	0.54	0.70	0.51
Pornography/Obscene Material	1		1	2	1	0.03		0.03	0.05	0.03
Prostitution	9	10	13	6	5	0.24	0.27	0.35	0.16	0.13
Weapon Law Violations	13	12	9	12	9	0.35	0.32	0.24	0.32	0.24

² Commonwealth Fusion Center Data Systems. Retrieved February 6, 2011, from the Mass CrimeSOLV database. Crime rates are based off of 2007 Census data

Selected Trend Data for NIBRS Offenses 2006-2010³



* Includes residential, commercial and, motor vehicle breaks

³ Commonwealth Fusion Center Data Systems. Retrieved January 30, 2010, from the Mass CrimeSOLV database.
Everett Police Department Annual Report – 2010

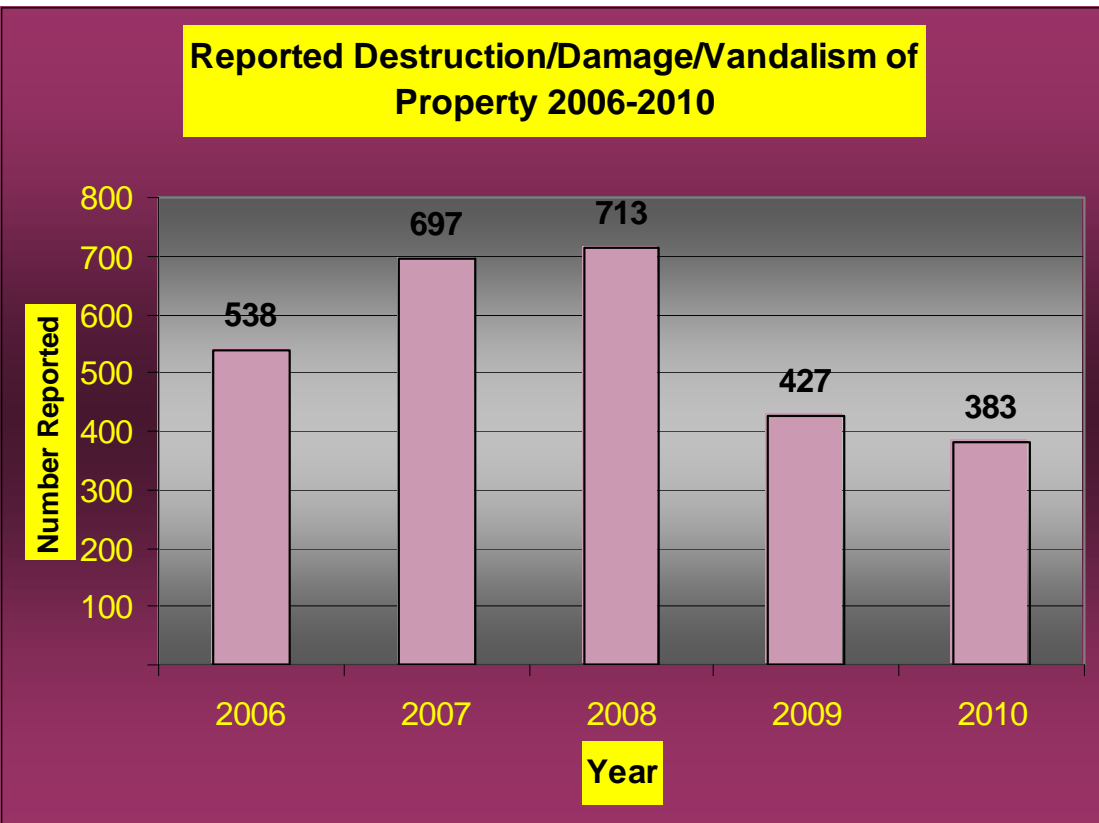
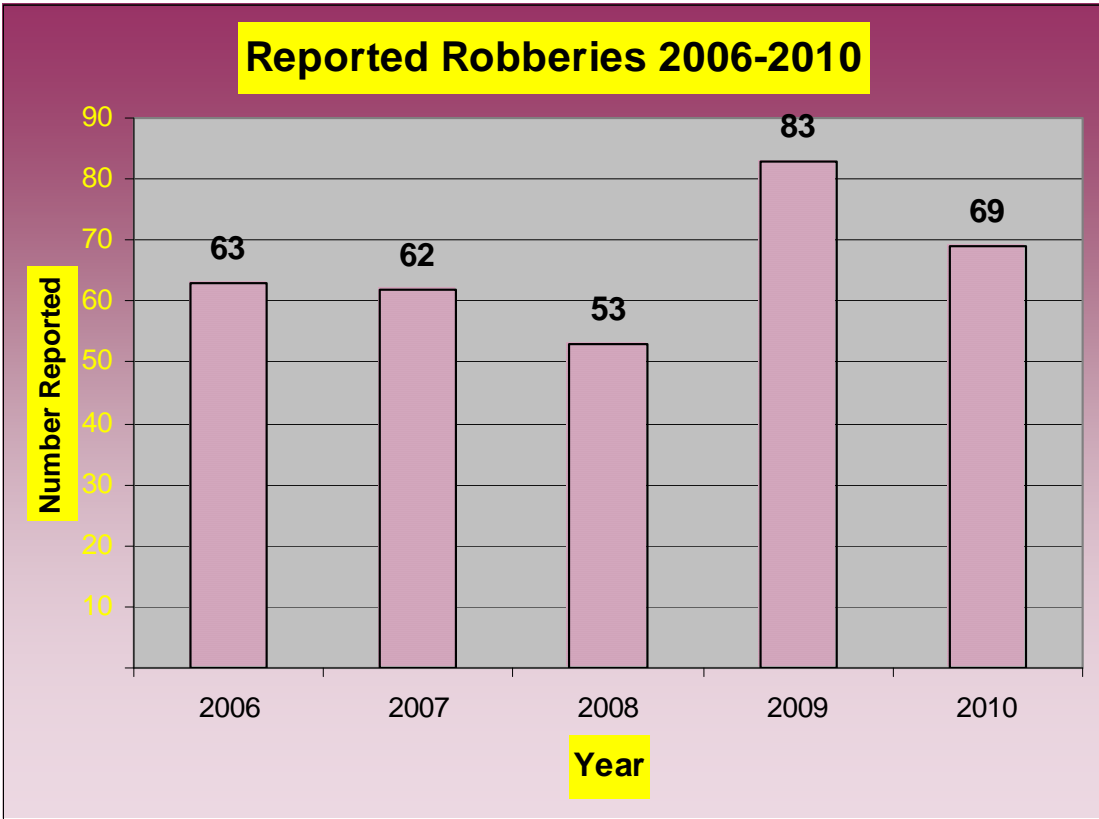


Table 2: Offenses by Year Including Averages and Percent Change⁴

Note: If offense type does not appear, then none were reported.

Incident Date								
Offense Type	2006	2007	2008	2009	2010	5 year avg.	% change over 5 years	% change 2009-2010
Total	2,557	2,881	3,037	2,480	2,532	2,697	-6.13%	1.04%
Murder and Nonnegligent Manslaughter		2	2	1	3	2	50.00%	50.00%
Kidnapping/Abduction	2	6	6	1	2	3	-41.18%	33.33%
Forcible Rape	11	12	17	7	13	12	8.33%	30.00%
Forcible Fondling	6	5	4	8	11	7	61.76%	15.79%
Statutory Rape			4	3	1	3	-62.50%	-50.00%
Aggravated Assault	99	128	122	116	134	120	11.85%	7.20%
Simple Assault	277	310	338	300	309	307	0.72%	1.48%
Intimidation	96	116	110	105	122	110	11.11%	7.49%
Arson	3	1	1	1	2	2	25.00%	33.33%
Burglary/Breaking & Entering	299	305	330	291	317	308	2.79%	4.28%
Counterfeiting/Forgery	11	7	11	11	18	12	55.17%	24.14%
Destruction/Damage/Vandalism of Property	538	697	713	427	383	552	-30.57%	-5.43%
Embezzlement	1		1		2	1	50.00%	0.00%
Extortion/Blackmail	1	1	2		1	1	-20.00%	0.00%
False Pretenses/Swindle/Confidence Game	10	12	9	12	16	12	35.59%	14.29%
Credit Card/Automatic Teller Fraud	37	41	32	53	55	44	26.15%	1.85%
Impersonation	49	62	44	60	39	51	-23.23%	-21.21%
Welfare Fraud	7	1	5	5	3	4	-28.57%	-25.00%
Wire Fraud	2		2	4	4	3	33.33%	0.00%
Robbery	63	62	53	83	69	66	4.55%	-9.21%
Pocket-picking	3	3	7	2	2	3	-41.18%	0.00%
Purse-snatching	17	18	20	15	13	17	-21.69%	-7.14%
Shoplifting	99	74	106	92	86	91	-5.91%	-3.37%
Theft From Building	53	53	52	51	73	56	29.43%	17.74%
Theft From Motor Vehicle	184	280	393	282	317	291	8.86%	5.84%
Theft of Motor Vehicle Parts/Accessories	7	8	13	13	15	11	33.93%	7.14%
All Other Larceny	329	375	319	257	290	314	-7.64%	6.03%
Motor Vehicle Theft	194	173	157	146	109	156	-30.04%	-14.51%
Stolen Property Offenses	23	21	32	16	21	23	-7.08%	13.51%
Drug/Narcotic Violations	90	71	87	71	68	77	-12.14%	-2.16%
Drug Equipment Violations	21	14	20	26	19	20	-5.00%	-15.56%
Prostitution	9	10	13	6	5	9	-41.86%	-9.09%
Weapon Law Violations	13	12	9	12	9	11	-18.18%	-14.29%

⁴ Commonwealth Fusion Center Data Systems. Retrieved January 30, 2010, from the Mass CrimeSOLV database. Average and percent change calculated by Melissa Trzepacz.

Table 2 Summary

The above table includes those crimes that have had a notable percent change in their reporting. Percent change looks at the number of crimes reported in 2010 by crime type and compares that number to the average number of crimes that were reported over the past four years. The resulting percentage change validates any trends that may be present in the 2010 data.

Highlights:

1. In 2009, 2480 offenses were reported, compared to the 2532 offenses reported in 2010, this 1.04% increase is not significant. However, the percent change suggests that though not significant when compared to 2009, the number of crimes reported in 2010 is about 6 percent below the five year average.
2. The crime types that had the most significant **decline** in the *past five years* are: prostitution (-41.86%), destruction of property (-30.57%), and motor vehicle thefts (-30.04%).⁵
3. The crime types that had the most significant **increase** in the *past five years* are: counterfeiting/forgery (55.17%), false pretenses/swindling (35.59%) credit card/ATM frauds (26.15%), theft of motor vehicle parts and accessories (33.93%), and theft from a building (29.43%), aggravated assault and intimidation are both up about 11%.
4. **Notable changes by number and type of crimes reported in 2010 compared to 2009:**
 - a. Notable 2010 increases: Counterfeiting/forgery up to 18 incidents from 11 incidents or 24.14%, theft from a building up to 73 incidents from 51 incidents or 17.74%.
 - b. Notable 2010 decreases: impersonation: down from 60 incidents to 39 incidents or -21.21% and motor vehicle theft: down 146 incidents to 109 incidents or -14.51%.

Note: In 2009, 282 thefts from a motor vehicle were reported. In 2010, there was an increase of 35 thefts, for a total to 317 thefts. These numbers highlight the power of the percent change data. Though the number seems large when compared to 2009, the 2010 number does not represent a significant increase when averaged over the past five years or when average with 2009. There has been only an 8.86% increase in thefts from a motor vehicle in the past five years and only a 5.84% increase from 2009.

Dispatcher Console



Dispatch Center



City Main Servers

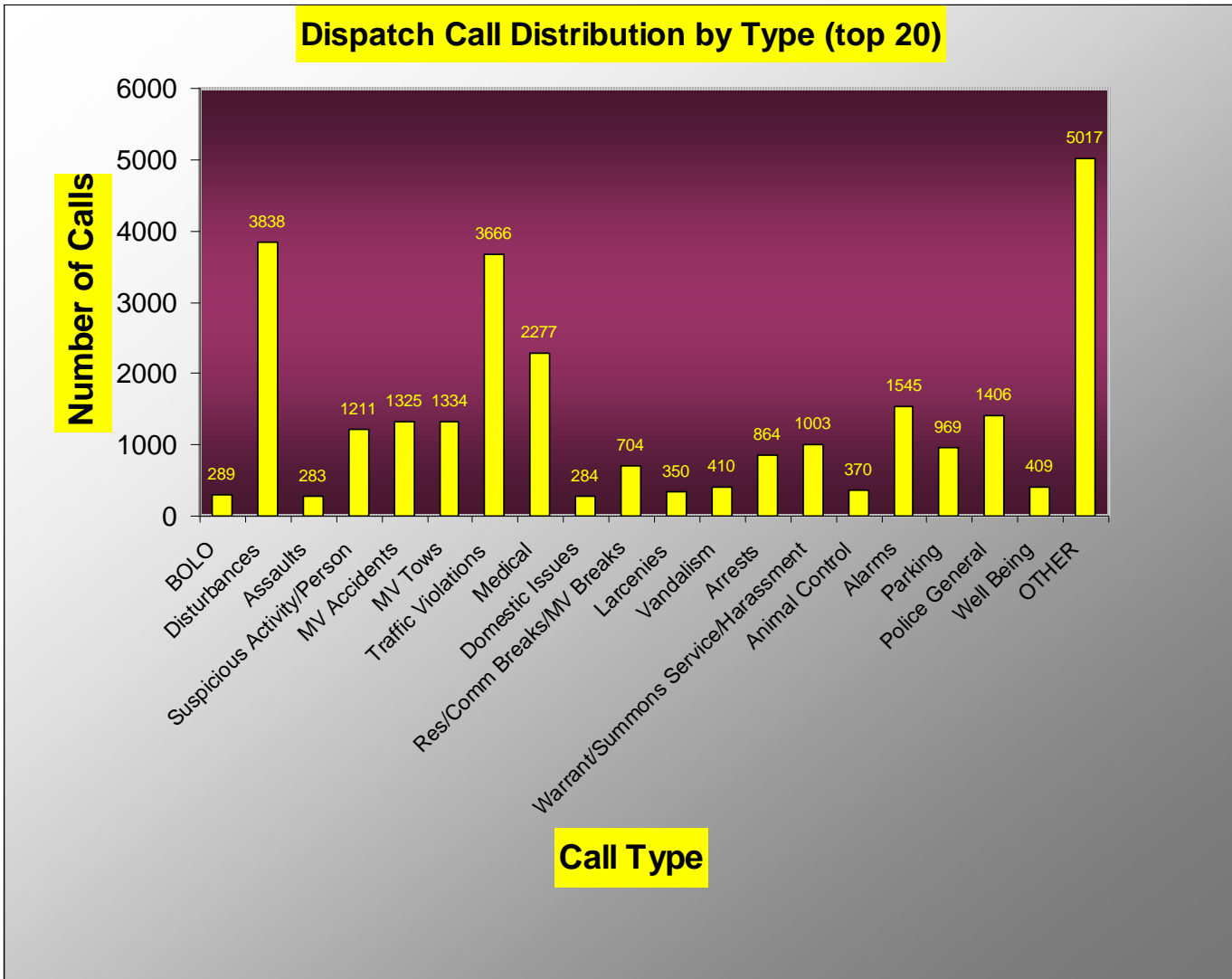


⁵ Does not include crime categories where the total number of crimes in each year is less than 10. Please note that some of remaining categories do contain small/low numbers.

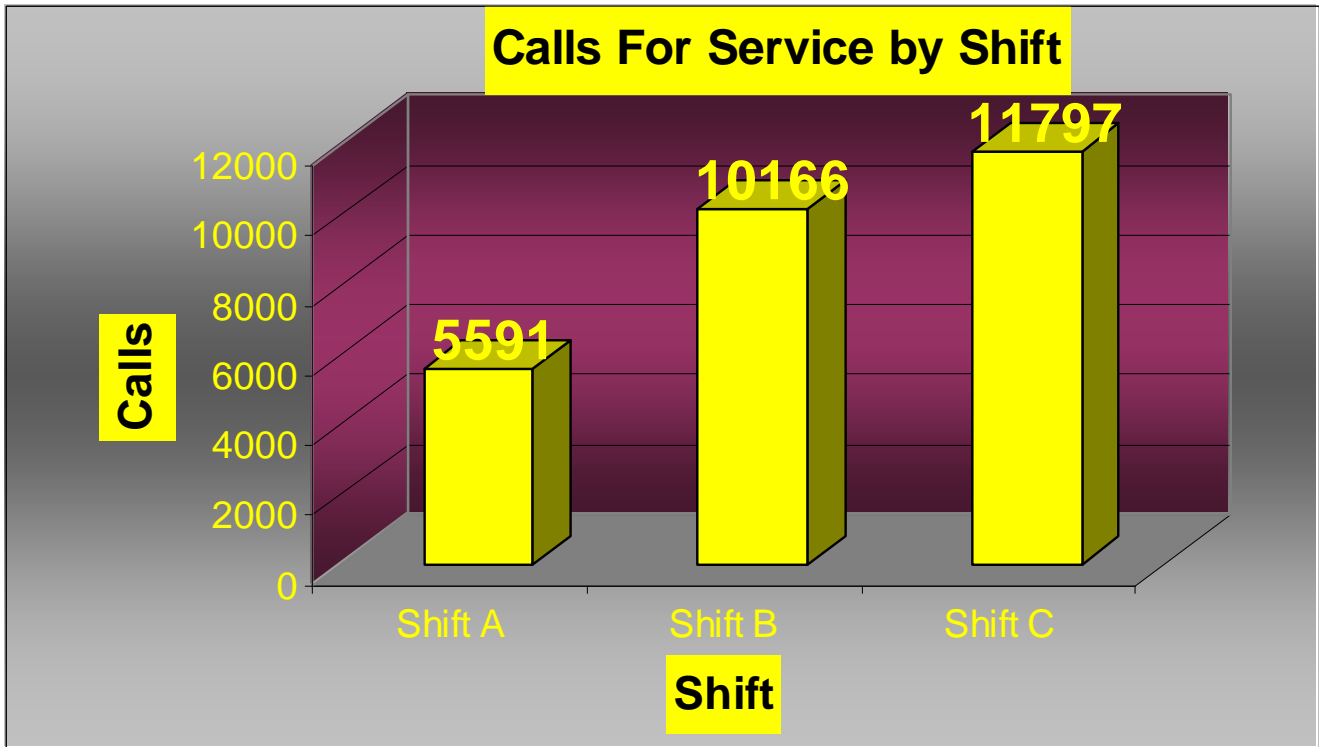
Calls For Service⁶

In 2010, **25,146** calls for service were logged by the Everett Police Department

- 27,554 action codes were utilized (each call can have more than 1 incident type attached).
- May was the busiest month with 2437 calls taken.
- February was the quietest month with 1751 calls taken.
 - In 2009, **26,132** calls were logged with the busiest month being June and quietest being December.



⁶ Microsystems, CrimeTracks. Retrieved January 27,2011 from the PROIV database.



Note: A shift: 12:00am-8:00am; B shift: 8:00am-4:00pm; C shift: 4:00pm-12:00pm. As captured by CrimeTracks.

Top 5 Call Types	Number of Calls
Disturbances	3838
Traffic Violations	3666
Medical	2277
Police General	1406
MV Tows	1334

2010 and 2009 Hot Spots

Top 12 Locations by Number of Calls for Service

Location	2010	# of Calls	Location	2009	# of Calls
Whidden Hospital		237	Rite Aid 405 Broadway		258
Walgreens 317 Ferry		224	Walgreens 317 Ferry		213
Glendale Park		192	Sweetser Circle (MV Citations)		161
Rite Aid 405 Broadway		177	Glendale Park		171
Everett HS		155	Target		157
Target		141	Whidden Hospital		124
Sweetser Circle (MV Citations)		119	Parlin Memorial Library		119
Stop N Shop		106	Stop N Shop		103
Broadway and Ferry (MV accidents/citations)		84	Everett HS		91
Costco		80	Old Everett HS		80
Madeline English School		74	Costco		79
			Parlin HS		71

***Notes on top two locations:**

- **Whidden Hospital** most frequent calls include: Unfounded police service, abandoned 911, unruly patients and other disturbances, motor vehicle breaks, warrant service, missing property
- **Walgreens** most frequent calls include: Motor vehicle citations and tows, disturbances, medical, suspicious activity, police information



Arrests/Summons/Warrants/Citations

In 2010, Everett Police made 864 *arrests* (824 adults, 40 juveniles).⁷

Top 5 Arrestable Offenses

Offense Type	Number Arrested
Warrant Arrest	351
Domestic Assault and Battery	136
Disorderly Person	63
Operating MV w/o License	60
Possession with intent/school zone	59

In 2010, 353 people were summonsed to court.

Top 5 Crime Types Issued Summons

Summons Issued by Crime Type	Number
Domestic A and B	16
A and B	23
License Suspended	30
Running a Red-light	36
Unlicensed Operation of a MV	143

In 2010, 136 warrants were issued by the Everett Police Department for 85 individuals.

Top 5 Crime Types Issued Warrants

Warrants Issued by Crime Type	Number
Domestic A and B	29
Violation of Protective Order	13
Larceny over \$250	12
Malicious Destruction of Prop. Over \$250	11
A an B With Dangerous Weapon	7

In 2010, over 5,500 citations were issued by the Everett Police Department. Of these, about 2,000 were warnings. Another 1,800+ were civil citations, 160+ were arrest citations, and over 300 were criminal citations.

Top 5 Crime Types Issued Citations

Citations Issued by Crime Type	Number
Equipment Violation MV	301
Speeding	579
Blocking/Causing Gridlock	1911
Unlicensed Operation of a MV	271
Failure to Wear Seatbelt	680
No inspection Sticker	374

⁷ Microsystems, CrimeTracks. Retrieved January 27,2011 from the PROIV database.



Everett Police Department
45 Elm Street Everett, MA 02149
(617) 389-2120
<http://www.everettpolicema.com/>

This report was compiled by Crime Analyst Melissa Trzepacz.
Report printed March, 2011.
Questions/Comments/Feedback: Melissa.trzepacz@ci.everett.ma.us

This report is available for free download on the Everett Police Department website: <http://www.everettpolicema.com/>